



*99 Hamilton Terrace, London, NW8 9QY*  
*£4,980 Per Calendar Month*







4 x  2 x  1 x 

This spacious four bedroom flat is located on the top floor of a detached period building on Hamilton Terrace close to the cafes, bars and shops of St John's Wood, Maida Vale and Little Venice. The picturesque Regents Canal is close by and Maida Vale tube is just two minutes walk away. This property comes part furnished and will be available from now.





Hamilton Terrace, NW8

Approximate Gross Internal Area  
1310 sq ft / 121.70 sq m

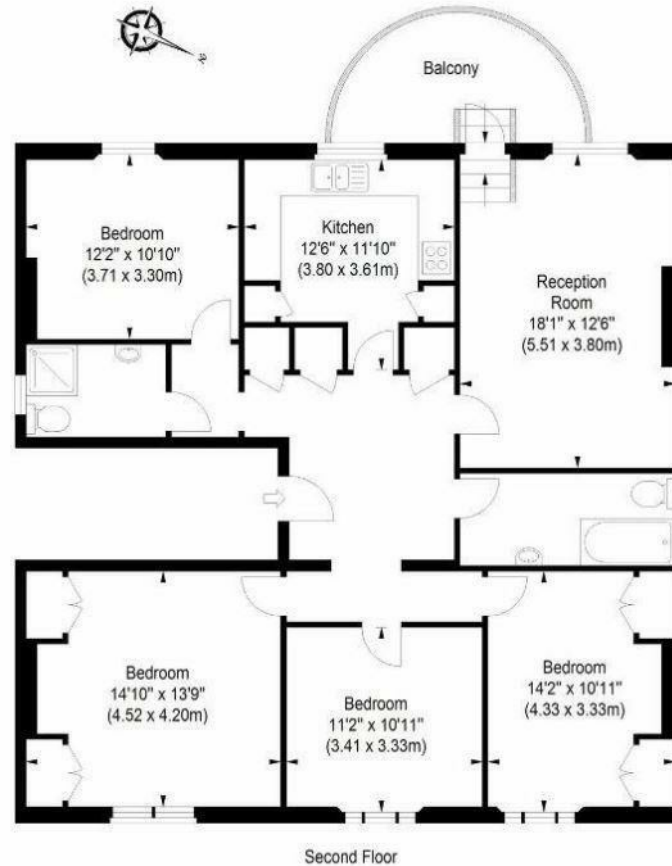


ILLUSTRATION FOR IDENTIFICATION PURPOSES ONLY

ALL MEASUREMENTS ARE MAXIMUM, AND INCLUDE WINDOW BAYS AND WARDROBES WHERE APPLICABLE  
THIS PLAN MUST NOT BE REPRODUCED BY ANY OTHER PERSON WITHOUT PERMISSION

**Important Notice** Debussy Property Service Ltd trading as Braithwait for themselves and for the vendor of this property whose agents they are, give notice that (i) these particulars do not constitute any part of an offer or contract, (ii) all statements contained within these particulars are made without responsibility on the part of Braithwait or the vendor, (iii) whilst none in good faith, none of the statements contained within these particulars are to be relied upon as a statement of representation or fact, (iv) any intending purchaser must satisfy him/herself by inspection or otherwise as to the correctness of each of the statements contained within these particulars, (v) the vendor does not make or give either Braithwait or any person within their employment any authority to make or give any representation or warranty whatsoever in relation to this property. Wide angled lenses may be used in photographs.

Call us on 0207 289 8889 or email [sales@braithwait.co.uk](mailto:sales@braithwait.co.uk)

B  
BRAITHWAIT